

PART OF THE S.E. 1/4, SEC. 30, T.6N., R.1W., S.L.B. & M.

WEST OGDEN ADDITION

BLOCKS 1,6 & 7

FOR COMPLETE ENG DATA SEE ORIGINAL DEDICATION PLAT IN BOOK 6, PAGE 18 OF RECORDS.

TAXING UNIT: 25

24TH

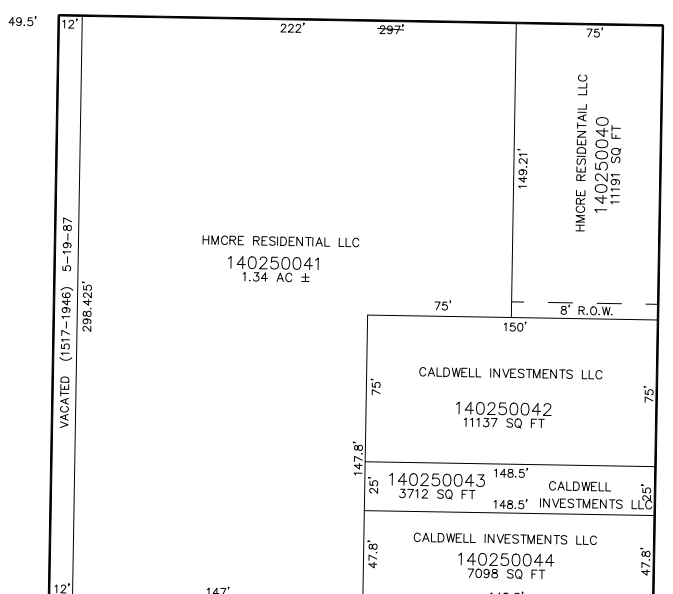
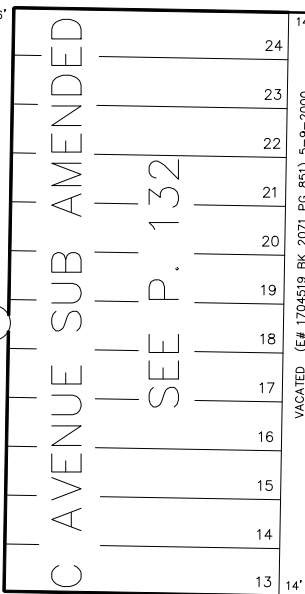
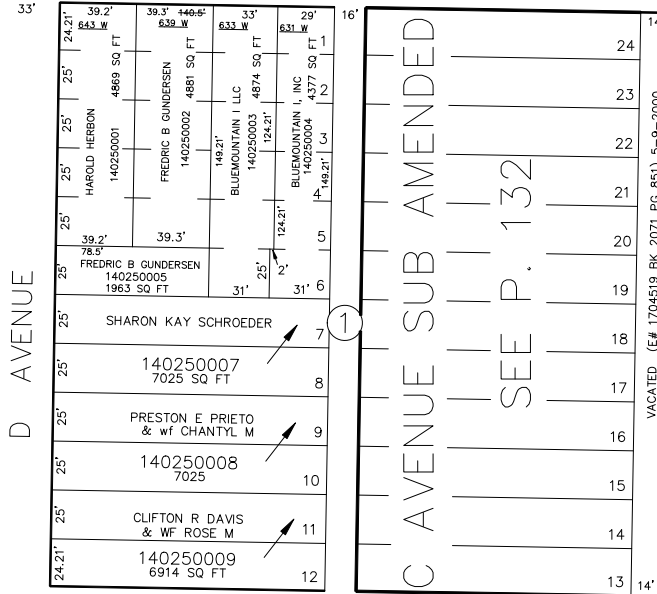
SEE PAGE 17

IN OGDEN CITY

SCALE 1" = 50'

STREET

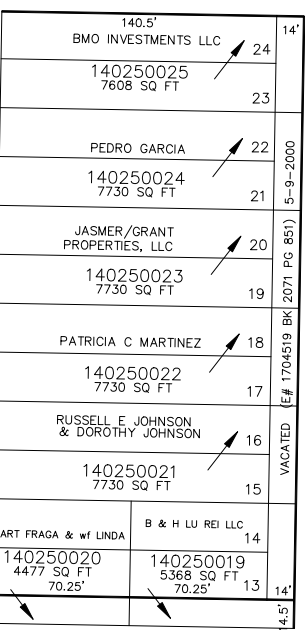
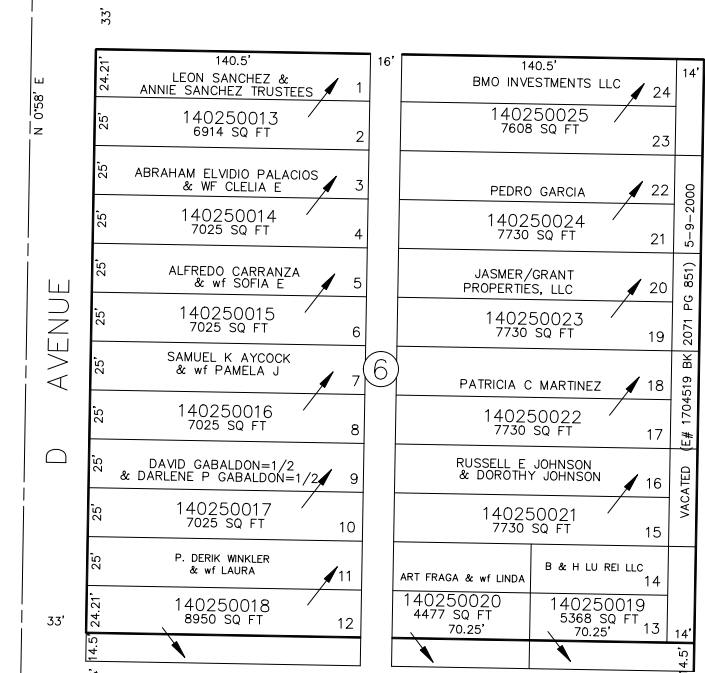
SEE PAGE 26



CAPITOL

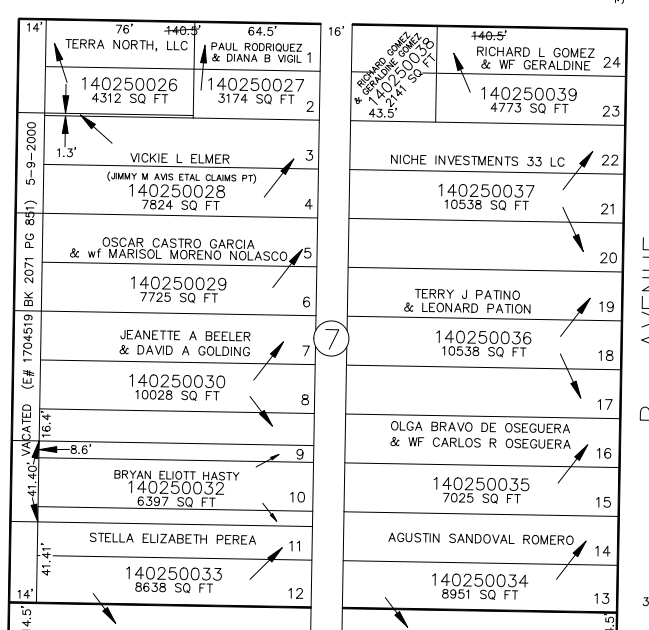
S 89°02' E

STREET



25TH ST.

S 89°02' E



25TH ST.